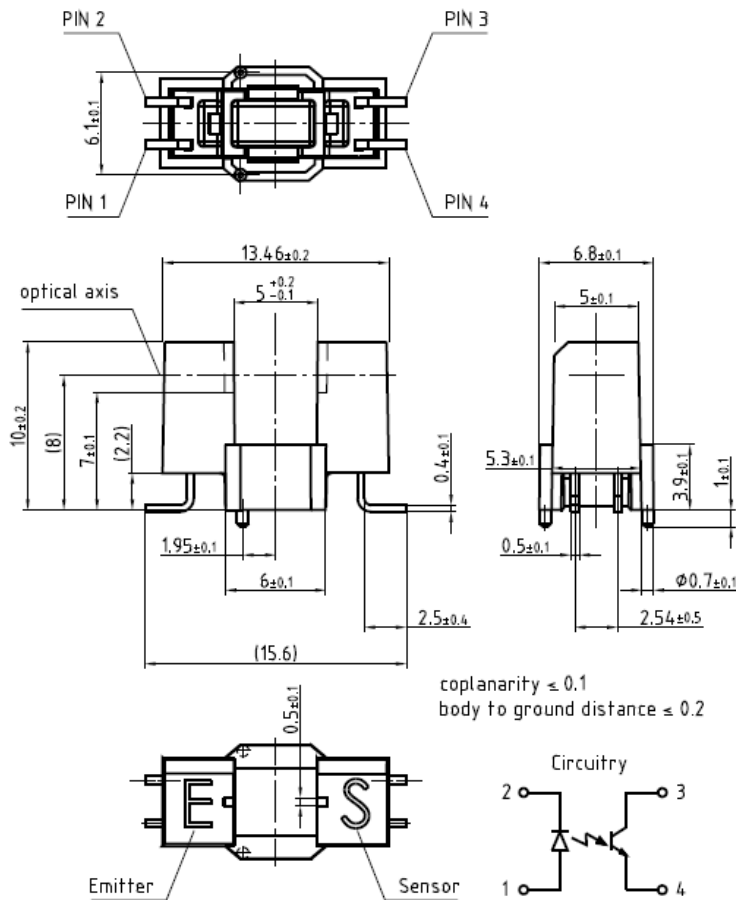


PACKAGING INFORMATION

SFH 9540, SMT Slotted Interrupter, Version 1.0



Package Outline



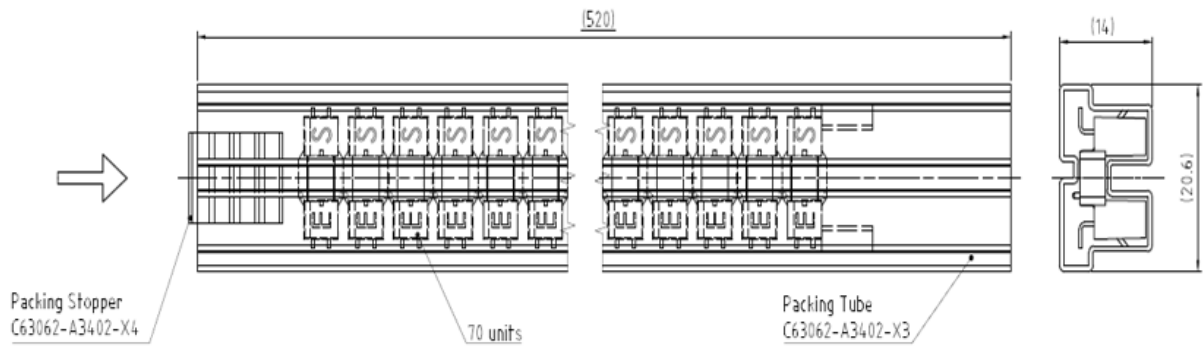
C63062-A3402-A1-04

Dimensions in mm.

Pinning

Pin	Description
1	Emitter - Anode
2	Emitter - Cathode
3	Sensor - Collector
4	Sensor - Emitter

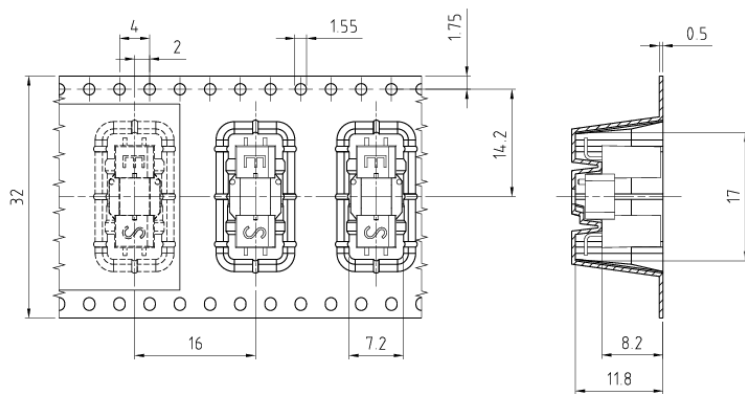
Packaging in tube: SFH 9540 (dimensions mm)



C63062-A3402-B9-02

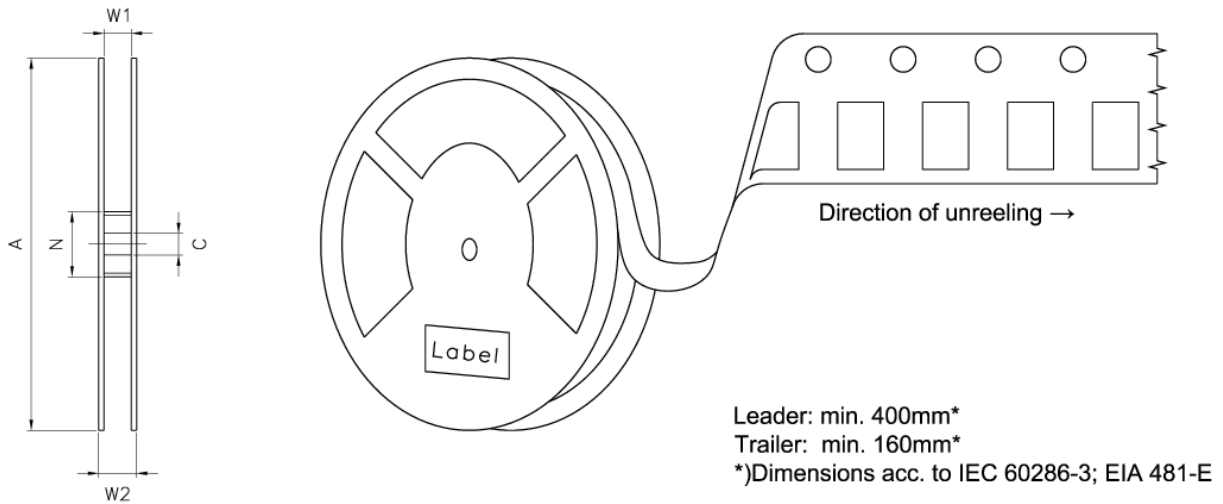
Packing units: 1260 pieces (70 pcs / tube)

Packaging in Reel: SFH 9540 R33 (dimensions mm)



C63062-A3402-B6-03

Tape and Reel
32 mm tape with 350 pcs on Ø 330 mm reel



Reel dimensions [mm]

A	N _{min}	C _{min}	W ₁	W _{2max}
330	60	12,8	32,4 +2	38,4

Barcode-Product-Label (BPL)

OSRAM Opto Semiconductors LX XXXX BIN1: XX-XX-X-XXX-X

RoHS Compliant

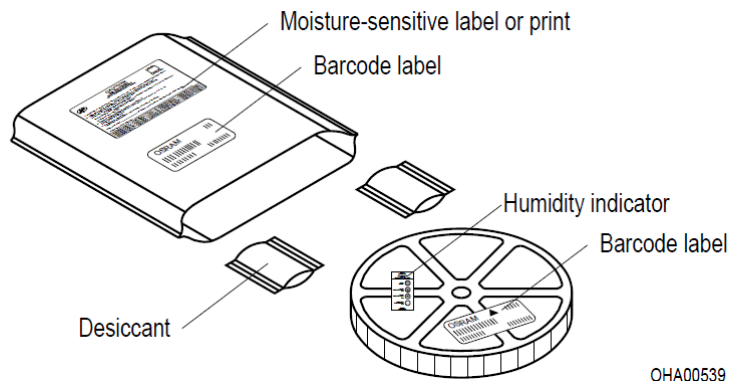
(6P) BATCH NO: 1234567890 ML Temp ST
X XXX °C X

(1T) LOT NO: 1234567890 (9D) D/C: 1234 Pack: RXX
DEMY XXX
X_X123_1234.1234 X

(X) PROD NO: 123456789 (Q) QTY: 9999 (G) GROUP: XX-XX-X-X

OHA04563

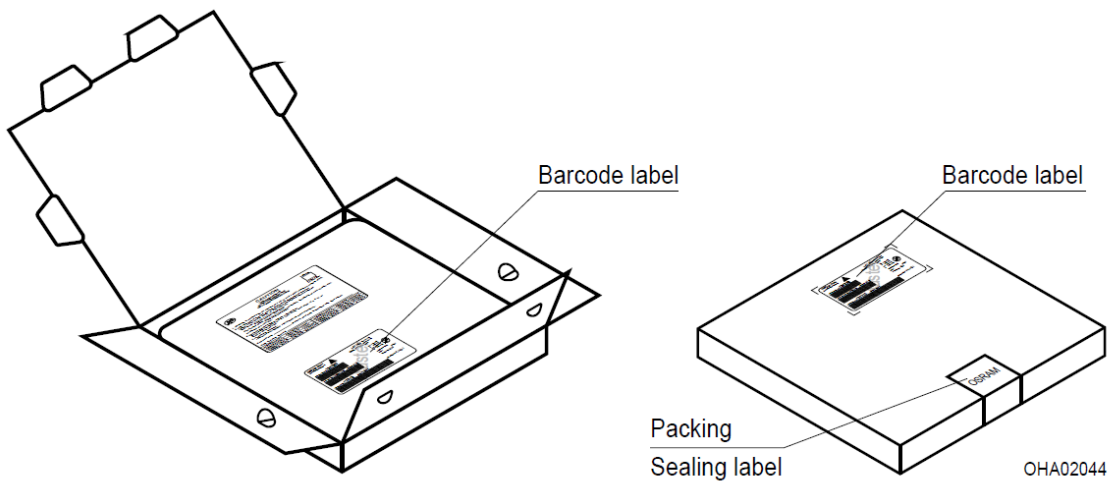
Dry Packing Process and Materials



Note:

Moisture-sensitive product is packed in a dry bag containing desiccant and a humidity card. Regarding dry pack you will find further information in the internet. Here you will also find the normative references like JEDEC.

Transportation Packing and Materials



Dimensions of transportation box [mm]

Width	Length	Height
352 ± 5	352 ± 5	53± 5